

auto electrical parts

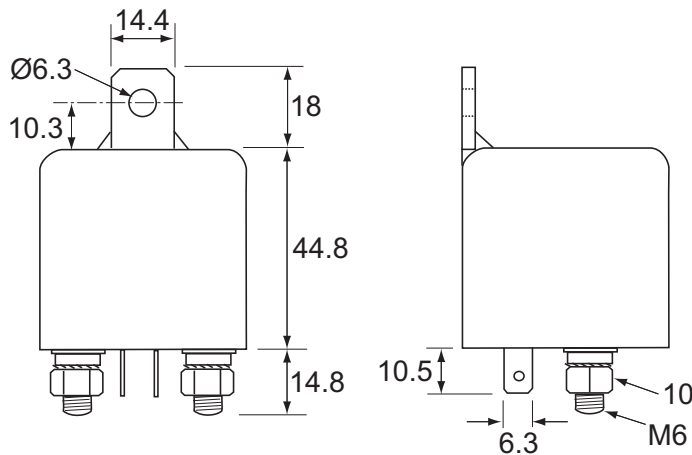
Technical Information Sheet

Part No. 0-727-10

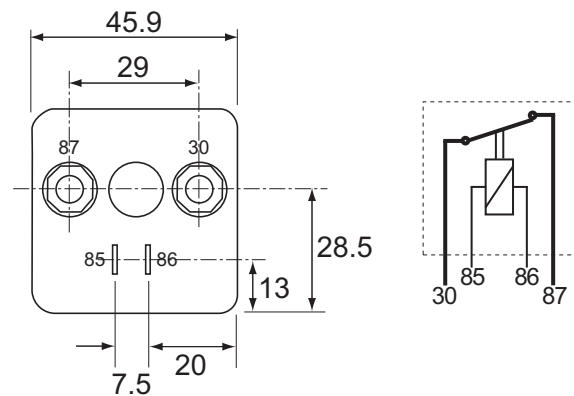
Extra heavy duty make and break relay. 12 volt, 100 amp, with bracket. 2 x 6.3mm terminal and 2 x M6 stud.



Technical Drawing (not to scale)



Circuit Diagram



Specification

Type	Make and break relay
Voltage	12 volt dc
Current	100 amp (continuous) 180 amp (intermittant)
Excitation voltage	4.8 volt
Coil dropout voltage	2.3 volt
Coil current	0.34 amp
Coil resistance	35
Terminal voltage drop	0.2 - 0.3 volt
M6 Stud	Brass
Torque	5 N/m (maximum)
Case material	Nylon PA6 with 15% Glass Fibre
Temperature range	-30°C to +80°C
Operating life	10 ⁵ (electrical)
Weight	96g
Dimensions	l 45.9 x w 45.9 x h 62.8mm (excluding terminals)

The information contained in this document is correct to the best of our knowledge at the time of printing. However, specifications may change at any time without notice.

Gordon Equipments Limited

Durite Works
Valley Road
Dovercourt
Essex CO12 4RX
England



Tel: +44 (0)1255 555200
Fax: +44 (0)1255 555222
E-mail: sales@durite.co.uk
Web: www.durite.co.uk

Registered in England at address shown No. 373113
The words 'Gordon', 'Durite', 'Nolten' and 'Acfil' are registered trade marks