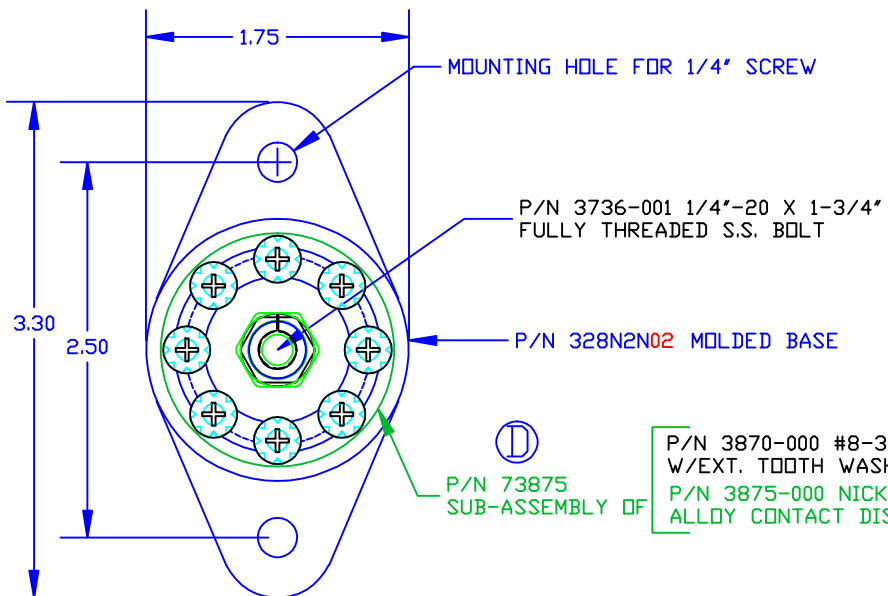


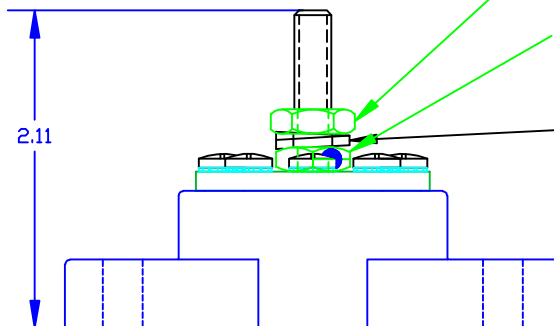
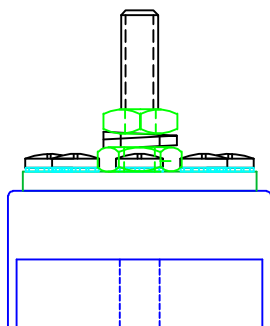
THE INFORMATION CONTAINED IN THIS DRAWING IS THE SOLE PROPERTY OF VTE INCORPORATED. ANY REPRODUCTION IN PART OR WHOLE WITHOUT THE WRITTEN PERMISSION OF VTE INCORPORATED IS PROHIBITED.

LTR.	REVISIONS	DATE
A	3842-000 WAS 3842	04APR06
B	ADDED COMPONENT P/N SUFFIXES	04APR06
C	3842-003 WAS 3842-000	10OCT06
D	ADDED SUB ASSEMBLY P/N 37875	11OCT06



DO NOT SCALE

P/N 3870-000 #8-32 x 5/16" PAN PHILLIPS SEMS SCREW W/EXT. TOOTH WASHER S.S. (8 PLCS)
P/N 3875-000 NICKEL PLATED COPPER ALLOY CONTACT DISK



P/N 3842-003 1/4"-20 S.S. HEAVY JAM NUT

P/N 3842-001 1/4"-20 TIN-PLATED BRASS HEAVY HEX JAM NUT BOTTOM NUT FACTORY INSTALLED TO 6 FT. LBS. (72 IN./LBS.)

P/N 3637-000 S.S. SPRING LOCK WASHER

P/N 329N0V02 CAVITY PLUG (NOT SHOWN)

TOLERANCE UNLESS OTHERWISE SPECIFIED: ±.030"/±0.8mm
RADIAL DIAMETERS TO BE MEASURED OVER MANDRELS, RING GAGES OR PIN GAGES OF SUITABLE SIZE

BASE MATERIAL: GLASS-REINFORCED NYLON
BASE MATERIAL U.L. RATING: 94 HB
DIELECTRIC STRENGTH: 630 VOLTS/MIL PER ASTM D149
CURRENT RATING: 165 AMPS
TEMP. RISE AT LOAD: 52 DEG. F.
RECOMMENDED MAXIMUM TORQUE: 5 FT./LBS. (60 IN./LBS.)



VTE Incorporated
5437 Robinson Road, P.O. Box 790
Pellston, Michigan 49769
Telephone: 1-800-527-9256, 231-539-8000
FAX: 231-539-0914

REF: ***	DATE: 09APR03	DRN BY: BRH	WEIGHT: ***
TITLE: 1/4" POWER DISTRIBUTION POST		CHK'D BY: BRH	SCALE:
MATERIAL: NOTED		PART NO. 77825 N02	
COLOR: RED	DRG CLASS: ****		