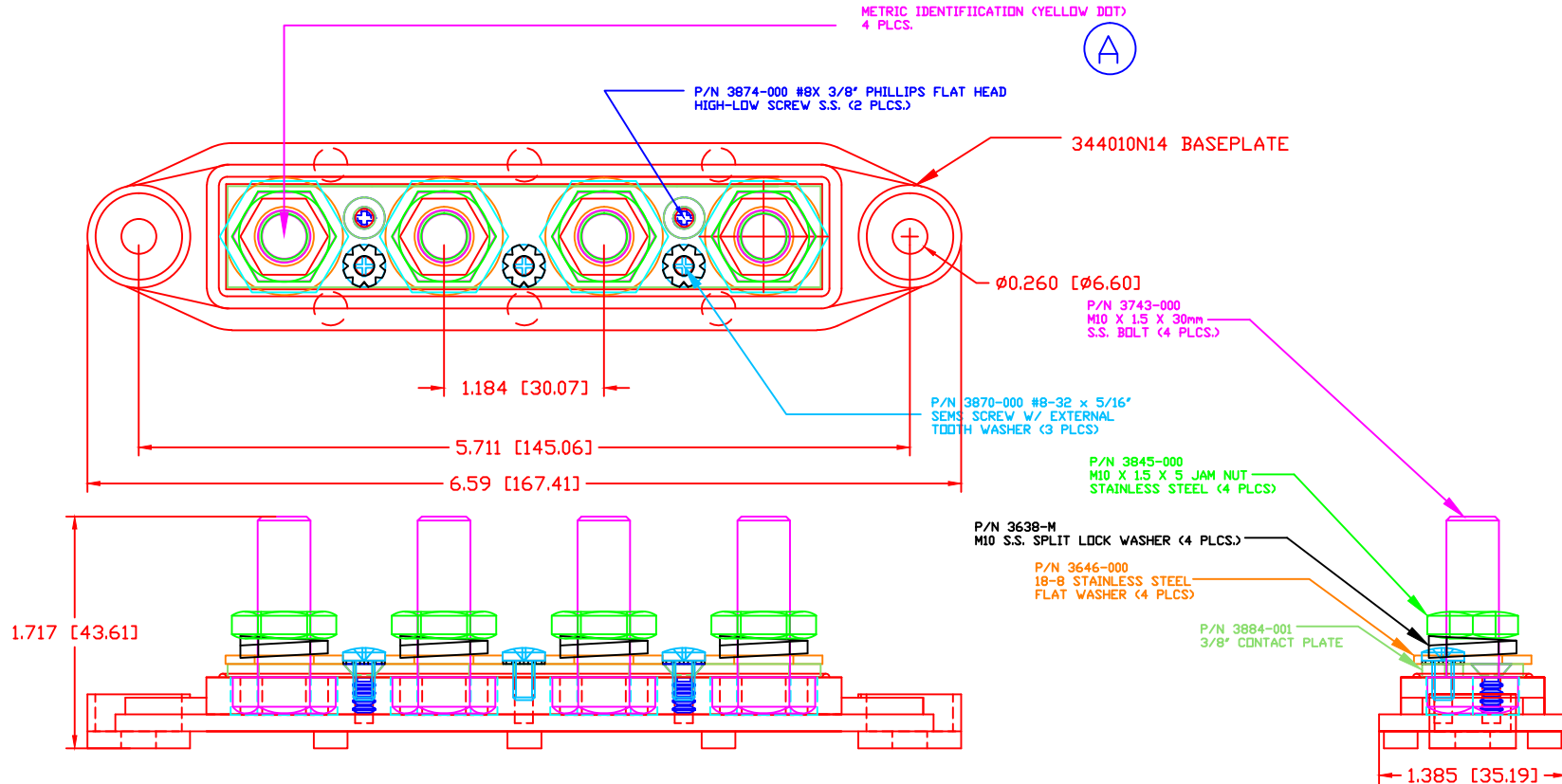


THE INFORMATION CONTAINED IN THIS DRAWING IS THE SOLE PROPERTY OF VTE INCORPORATED. ANY REPRODUCTION IN PART OR WHOLE WITHOUT THE WRITTEN PERMISSION OF VTE INCORPORATED IS PROHIBITED.

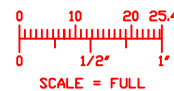
LTR.	REVISIONS	DATE	INT.
A	ADDED METRIC IDENTIFICATION METHOD	05APR11	BRH
B	REMOVED (BLUE DOT) NOTE	20OCT15	RAS
C	UPDATED CURRENT RATING	02JUN16	RAS



TOLERANCE UNLESS OTHERWISE SPECIFIED:
 MOLDED PRODUCTS ONLY: ±.030"/±0.8mm
 HARDWARE ITEMS: ±0.010"/±0.25mm
 RADIAL DIAMETERS TO BE MEASURED OVER MANDRELS,
 RING GAGES OR PIN GAGES OF SUITABLE SIZE

MAXIMUM RECOMMENDED FASTENER TORQUE: 15 FT./LBS. (180 IN./LBS.)
 MAXIMUM RECOMMENDED AMPERAGE: 350 AMPS @ 12VDC

BASE MATERIAL: GLASS-REINFORCED NYLON
 BASE MATERIAL U.L. RATING: 94 HB
 VTE MATERIAL P/N: 1111210514



VTE Incorporated
 5437 Robinson Road, P.O. Box 790
 Pellston, Michigan 49769
 Telephone: 1-800-527-9256, 231-539-8000
 FAX: 231-539-0914

REF: *****	DATE: 03JUN10	DRN BY: BRH	WEIGHT: *****
TITLE: BUSBAR, 4 POINT, M10			SCALE:
MATERIAL:		PART NO.	
COLOR: *****		74010N0N14	
DRG CLASS *****			