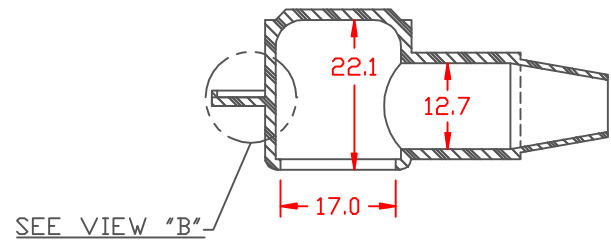


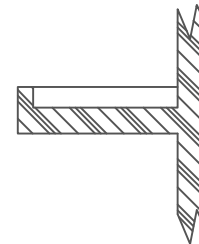
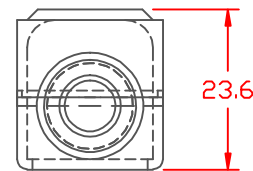
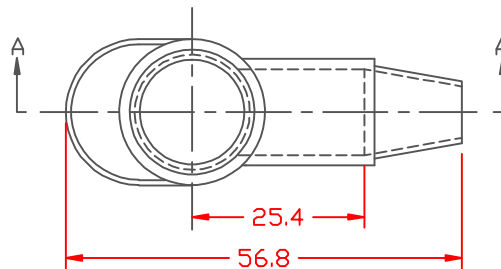
PROPRIETARY RIGHTS ARE CLAIMED FOR THE
MATERIAL DISCLOSED IN THIS DRAWING.

LTR.	REVISIONS	DATE
✂	*****	00-00-98



SECTION A-A

TYP. WALL THICKNESS = 1.5
SEAL NO. 2 SHOWN



VIEW "B"
SCALE: 3" = 1"

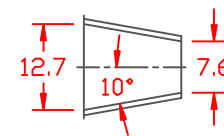
TOLERANCE UNLESS OTHERWISE SPECIFIED: $\pm 0.030"$ / $\pm 0.8\text{mm}$
RADIAL DIAMETERS TO BE MEASURED OVER MANDRELS,
RING GAGES OR PIN GAGES OF SUITABLE SIZE

SEAL OPTIONS

SEAL THICKNESS = .8

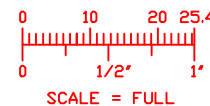


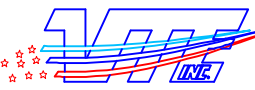
NO. 1
Wire Gages
18 - 10



NO. 2
Cable Gages
8 - 2

VTE Material Part No:	1101650102
Material:	RED PVC
Material Part No	9812-65-RED683
Max. Operating Temp:	105 C
Shore Durometer	"A" 10 SEC. 67/62
Specific Gravity:	1.34
Ult. Elongation %:	475
Brittle Temp:	-44 C
Tensile Strength PSI:	1547 PSI
Dielectric Strength, v./ml	540
U.L. Rating:	94 V2
MEETS:	FMVSS.302



 VTE Incorporated 5437 Robinson Road, P.O. Box 790 Pellston, Michigan 49769 Telephone: 1-800-527-9256, 231-539-8000 FAX: 231-539-0914			
REF:	DATE: 3-18-98	DRN BY: JC CHK'D BY:	WEIGHT: 012 LBS. / 5.99 G.
TITLE: TERMINAL INSULATOR CAP			PART NO. 218N2V02
MATERIAL:			
COLOR:	DRG CLASS		